

Important Tips

Your needs and those of your family should be the primary factors considered when determining the timing of your evacuation. Do not delay your departure in anticipation of the announcement of the contraflow plan.

Should the contraflow be activated citizens will be advised through local radio and television stations.

All citizens should prepare a plan well in advance of the evacuation.

The following steps are recommended:

- ✓ Assemble your disaster supplies kit with items such as flashlights, cell phones, extra batteries, battery chargers, portable radio, first aid kit, emergency water and food, medical supplies and equipment, nonelectric can opener, highway map, important documents such as insurance and medical information, etc.
- ✓ Secure your home against disaster to help reduce damages. Cover windows with shielding materials. Secure or put up any loose objects from around your home.
- ✓ Make provisions for pets.
- ✓ Know your area's evacuation plan/routes before you leave home. (<http://www.txdps.state.tx.us/dem/Hurricanemaps/ValleyInlandEvacuationMap.pdf>)
- ✓ Fill your vehicle with gas as early as possible. Take only the vehicle necessary to transport you and your family to safety. Extra vehicles create congestion.
- ✓ Bring extra cash in case banks are closed and ATM machines are inoperable.
- ✓ Notify family and friends (especially those out of the area) of your plan and your destination.
- ✓ Develop an emergency plan in case family members are separated from one another, e.g., instruct all evacuating family members on the name and contact information of your designated out-of-area friend or family.
- ✓ Ensure children know how and when to call 911.
- ✓ Evacuate, traveling safely to your destination.

After the storm, listen to local officials for the all-clear signal before returning home. Check for information at TxDOT and DPS web sites.

Remember, do not try to drive through standing water. Just a few inches of water can float an automobile.

Fender-Bender?

State law requires motorists to move fender-bender accidents out of the travel lanes to the shoulder of the road. To keep all travel lanes and shoulders clear, however, all disabled vehicles on the shoulder will be relocated to the next exit ramp where further assistance may be available.

For more information on hurricane preparedness and evacuation safety, visit these sites:

TxDOT:
<http://www.dot.state.tx.us>

Texas Department of Public Safety:
<http://www.txdps.state.tx.us>

Governor's Division of Emergency Management:
<http://www.txdps.state.tx.us/dem>

American Red Cross
1-800-GET-HELP
(438-4357)

RIO GRANDE VALLEY

TEXAS



Hurricane Evacuation Contraflow Plan

Motorist Advisory

2006
Hurricane Season



Hurricane Evacuation Contraflow Plan

WHO This plan will affect motorists evacuating from the Rio Grande Valley coastal area.

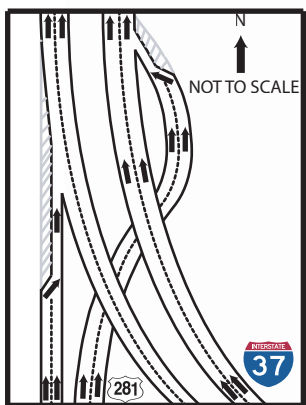
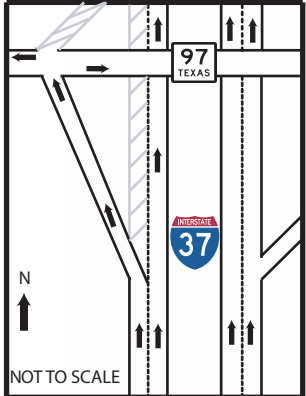
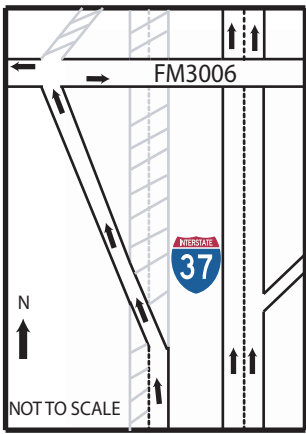
WHY To help move citizens safely and efficiently out of harm's way during large-scale evacuations.

WHAT If this plan is activated, US 83 and US 281 southbound lanes will be reversed to carry two lanes of northbound traffic. Traffic in the contraflow lanes will be able to exit I-37 at FM 97 and FM 3006 (Law enforcement will be posted at this exit).

WHEN The reversal will be considered only when the Rio Grande Valley area is threatened by a major hurricane and mandatory evacuations are issued. A decision to reverse US 83 and US 281 will be made by the Texas Department of Public Safety based on the strength of the storm and projected landfall.

WHERE The contraflow operations will begin in Brownsville. Some northbound traffic will cross over to the contraflow side to travel northbound.

The contraflow lanes will end on I-37 at SH 97 and FM 3006 near Pleasanton, TX. The left contraflow lane will be forced to exit at SH 97 and the right contraflow lane will be forced to exit at FM 3006.



LEGEND

No Traffic Zone

